



Redmayne Arnold & Harris
estate agents, letting agents & surveyors

rah.co.uk



TO LET



Flat 1, Editha House Queen Ediths Way, Cambridge, CB1 8PJ

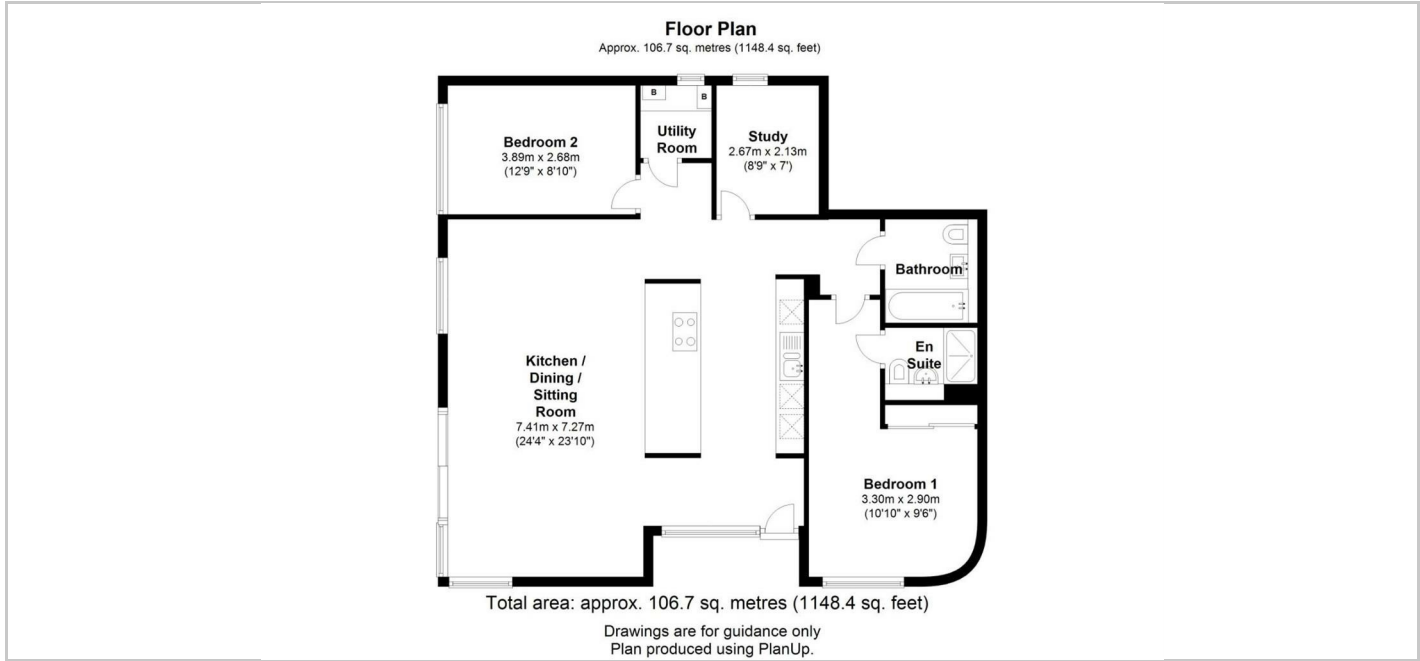
£2,100 PCM



THE PROPERTY

A three bedroom, ground floor apartment providing light, spacious and contemporary accommodation just moments away from Addenbrooke's Hospital, and less than 1.5 miles away from the City Centre. The property comprises open plan kitchen/dining/sitting room, utility room, two bedrooms- one with en-suite, study and a family bathroom. There is also an allocated parking space. The property will be managed by RAH.

EPC Rating: B
 Council Tax band: F
 Deposit £2420
 Holding Deposit: £390
 Minimum tenancy length 12 months



SITUATION

Directions

Energy Efficiency Rating	Current	Potential
Very energy efficient - lower running costs		
(92 plus) A		
(81-91) B		
(69-80) C		
(55-68) D		
(39-54) E		
(21-38) F		
(1-20) G		
Not energy efficient - higher running costs		
England & Wales	EU Directive 2002/91/EC	

Environmental Impact (CO ₂) Rating	Current	Potential
Very environmentally friendly - lower CO ₂ emissions		
(92 plus) A		
(81-91) B		
(69-80) C		
(55-68) D		
(39-54) E		
(21-38) F		
(1-20) G		
Not environmentally friendly - higher CO ₂ emissions		
England & Wales	EU Directive 2002/91/EC	